



MIDTOWN
TOWERS

ISLAMABAD





ABOUT US

Al Hunain Group is one of the leading group of companies operating in various fields like construction, tourism, hospitality, travel & tours and real estate development. Established in 1992 with a proven track record of more than 29 years in respective fields, we believe in development, innovation and excellence in everything we deliver. With countrywide and overseas presence, our highly qualified staff with professional management believes in making moments memorable while offering services to our clients that make a big difference. At Al Hunain we do ordinary things in an extraordinary way, a philosophy that has been defining our company's success since incorporation.



VISION

To be the most iconic and promising real estate developer of Pakistan by delivering luxury, ultra modern quality work and projects meeting international standards.

We aim to set a benchmark in reshaping lifestyle with a focus on design excellence, build quality and timely delivery so that we can compete with the top developing countries of the world. We want to put Pakistan's name on the top list of iconic man made structures in the world and we will put in all our efforts and energy for this purpose.



MIDTOWN TOWERS

Cubic Developers (Pvt) Ltd
led by Al-Hunain Group
proudly presents you a state
of the art mega project in the
midst of Islamabad.



5 STAR HOTEL



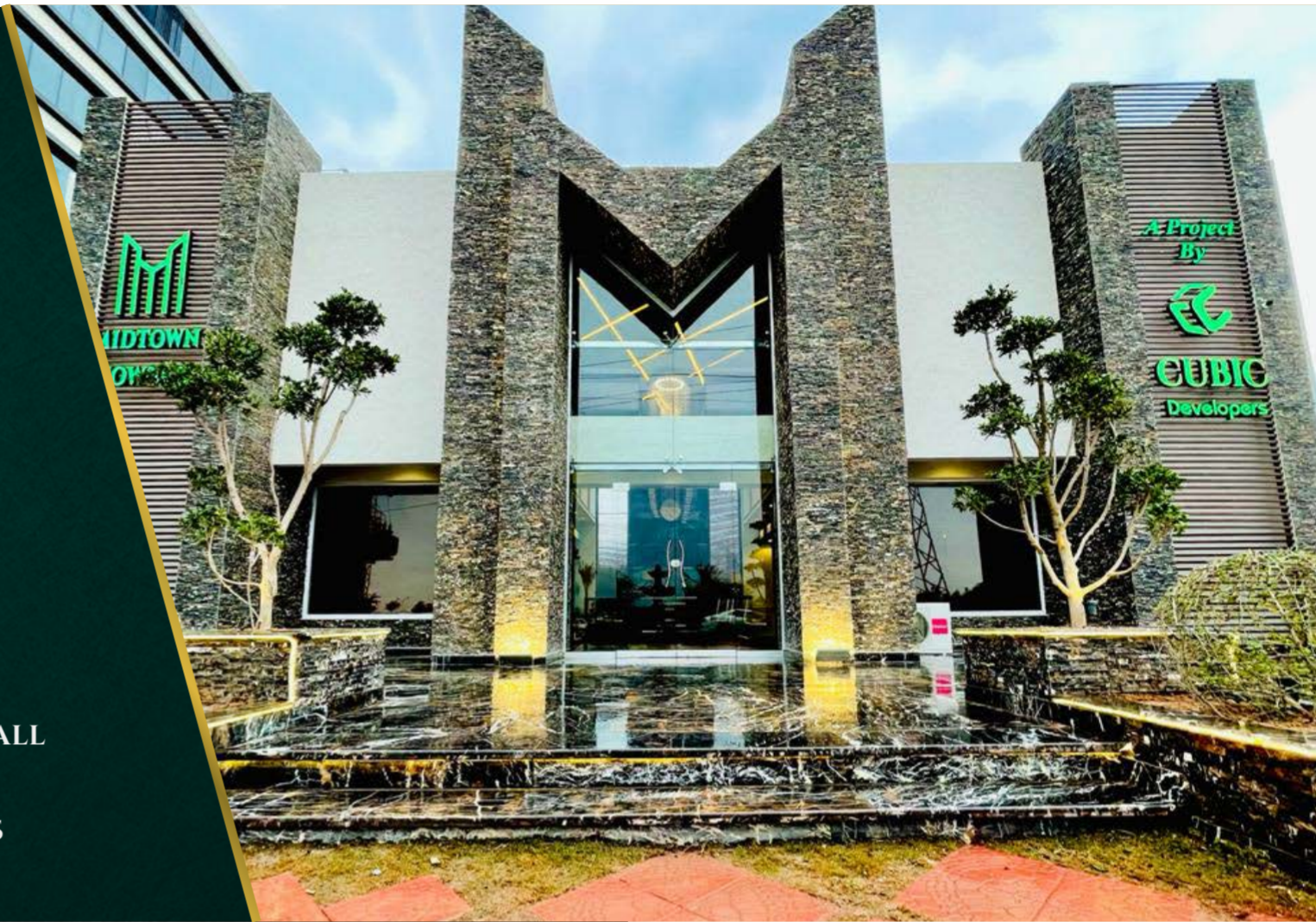
MIDTOWN MALL



OFFICES



APARTMENTS



MidTown Towers comprises of 3 hi-rise
towers united & combined with 5
floors of luxury shopping mall & a
dedicated floor for corporate offices.
With a vision to give its customers a
breathtaking experience, MidTown
Towers is set to Redefine
Luxury Living

‘YOUR ULTIMATE LIFESTYLE’



ISLAMABAD

THE SECOND MOST BEAUTIFUL CAPITAL IN THE WORLD

Islamabad is one of the most beautiful city in the world ideally planned in the outskirts of Margalla Hills.

The federal capital is not only beautiful with ravishing scenery and natural exquisiteness but also offers its residents with a state of the art infrastructure that is top-notch with exclusiveness.





PAKISTAN'S FIRST EVER FULLY SMART BUILDING



5-STAR SERVICED APARTMENTS



SERVICES

- Kitchen & Laundry Facilities
- Frequent Maid Service
- 24/7 Guest Service
- Regular House Keeping
- Garbage Chute System
- Foolproof Security

RESIDENCY

The
Art
Of
Luxury



Midtown sets a new benchmark in apartment living. A new lifestyle awaits here offering spacious floor plans to provide an environment you desire. Midtown Residency offers variety of options to choose from including 1, 2, 3 and 4 bed exclusively designed apartments.



MIDTOWN MALL

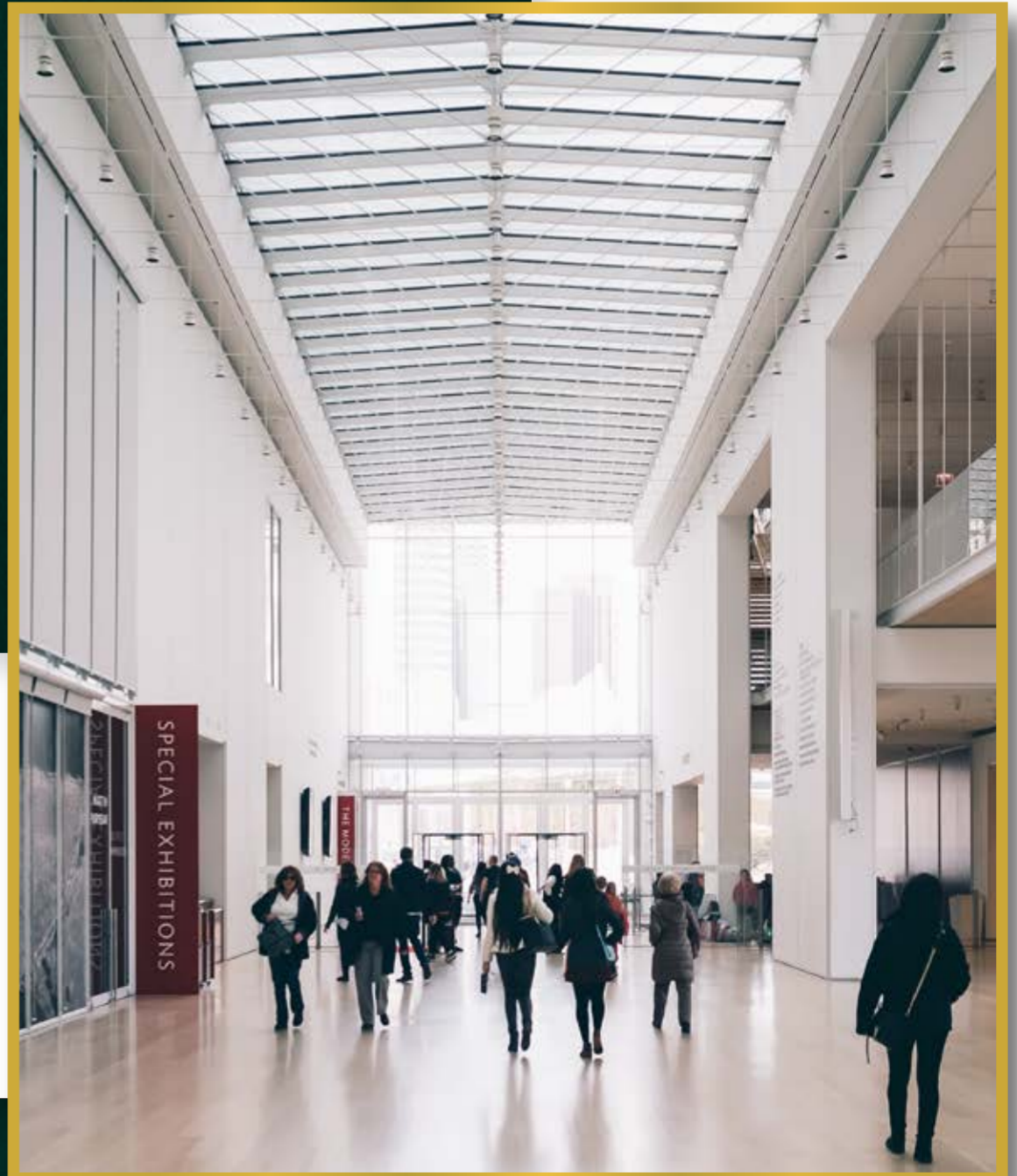


Spread over an area of 133,000 square feet, Midtown Mall is the perfect destination for families, that offers a memorable shopping experience and a fun time for kids. The stores, attractions & services in this mall are combined to make it the most comprehensive retail, hospitality & entertainment complex in Islamabad.



OFFICES

Midtown Towers has a dedicated office plan with all the services at your doorsteps. Our office plans have a direct hassle free access & provide you the ultimate workplace experience with fibre connectivity so you may carry out routine work and business meetings with absolute peace of mind.





HOTEL



Situated in close proximity to many of Islamabad's popular attractions & business centres, the hotel is just a few minutes away from Islamabad International Airport & seamlessly connects to Srinagar/Kashmir Highway. With direct access to Midtown Mall, guests will have many options to choose from shopping, dining and entertainment. The hotel is going to be the most luxurious hotel of Pakistan upon its completion.



PENTHOUSE



LUXURY IN THE CLOUDS

- Exquisitely Furnished
- Jacuzzi & Private Pool
- Private Steam & Sauna
- BBQ Deck

HEALTH & ENTERTAINMENT CLUB

- Modern Gymnasium
- Sauna
- Temperature Controlled Swimming Pool (Separate pools for ladies, gents and kids)
- Spa
- Jacuzzi
- Mini Golf
- Indoor Games (Snooker, Table Tennis etc)
- Bowling Alley

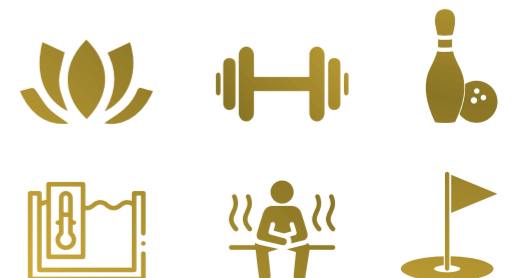


6



A HEALTHY LIFESTYLE AWAITS

The state of the art Health & Entertainment Club in Midtown Towers consists of a modern gymnasium for fitness enthusiasts, a sauna room, a soul soothing spa, temperature controlled swimming pool, mini golf, bowling alley and other indoor games.



AN IDEAL LOCATION

07

MINUTES DRIVE
TO ZERO POINT



800

METER DISTANCE
TO METRO
BUS STATION

18

MINUTES DRIVE
TO AIRPORT



12

MINUTES DRIVE
TO BLUE AREA

05

MINUTES DRIVE
TO GT ROAD

11

MINUTES DRIVE
TO PIMS

15

MINUTES DRIVE
TO ISLAMABAD-LAHORE
MOTORWAY M2

600

METER DISTANCE
TO McDonald's

AN IDEAL LOCATION



DISCLAIMER

This brochure and plan and/or any marketing material and the information contained therein does not form part of any contract, agreement or legal relationship and while reasonable effort have been exerted to ensure the accuracy of such information ; this cannot serve as a guarantee and no representations and / or warranties (whether express, implied or otherwise) are excluded to the extent permitted by law. Midtown towers do not make any assurance, indemnification and / or representation(s) in respect of the brochure and plans and / or any marketing material.

FEATURES



DEDICATED LOBBY



24/7 SECURITY



CARGO LIFT



SWIMMING POOL



SAUNA ROOM



STEAM ROOM



HEALTH CLUB



COFFEE SHOP



ELECTRICITY BACKUP



CCTV



SALOON



KIDS PLAY AREA



PARKING



SPA



ATM



INTERNATIONAL & LOCAL BRANDS SHOPS



CENTRALLY AIR CONDITION



ELECTRICITY BACKUP



SHUTTLE SERVICE TO & FROM METRO



ELEVATORS & ESCALATORS



KIDS POOL AREA



DUBAI STYLE WATER FALL



DIRECT ACCESS TO SPA



JACUZZI



JUICE BAR



GARBAGE CHUTE



LARGE ATRIUM



ELEVATORS



FOOD COURT



LAVISH CORRIDORS

A LIFESTYLE YOU DESERVE

A LUXURY YOU DESIRE

APARTMENT LAYOUTS

T
Y
P
E

A

915 sq.ft



- TERRACE 7'-9" X 7'-9"
- BATH 1 8'-0" X 5'-6"
- BEDROOM 1 14'-6" X 13'-0"
- KITCHEN 7'-0" X 11'-0"
- LOUNGE 12'-0" X 13'-0"
- BEDROOM 2 12'-0" X 13'-0"
- BATH 2 5'-0" X 7'-6"
- DRESS 5'-0" X 6'-0"
- POWDER 3'-9" X 5'-6"



T
Y
P
E

B

1000 sq.ft



- TERRACE 19'-3" X 5'-0"
- BATH 1 6'-0" X 9'-0"
- BEDROOM 1 13'-0" X 15'-0"
- OPEN DUCT 1 6'-0" X 3'-9"
- LOUNGE 13'-0" X 12'-6"
- CORRIDOR 6'-0" WIDE
- KITCHEN 6'-0" X 12'-6"
- BEDROOM 2 13'-0" X 11'-9"
- BATH 2 8'-0" X 5'-3"
- OPEN DUCT 2 4'-6" X 5'-3"

T
Y
P
E

C

1025 sq.ft



- BEDROOM 1 16'-0" X 13'-0"
- BATH 1 7'-0" X 5'-0"
- LOBBY 7'-3" WIDE
- PASSAGE 2'-3" WIDE
- KITCHEN 7'-0" X 9'-0"
- LOUNGE 14'-0" X 17'-6"
- BEDROOM 2 12'-6" X 17'-0"
- BATH 2 8'-0" X 6'-6"
- POWDER 5'-9" X 3'-6"
- OPEN TO SKY 5'-9" X 3'-0"

T
Y
P
E

D

1370 sq.ft



- | | | | |
|---------------|-----------------|-------------|-----------------|
| ➤ BEDROOM 1 | 15'-0" X 13'-0" | ➤ LOUNGE | 17'-0" X 14'-6" |
| ➤ BATH 1 | 8'-0" X 7'-0" | ➤ BEDROOM 2 | 12'-3 X 15'-0" |
| ➤ OPEN TO SKY | 6'-0" X 5'-0" | ➤ BATH 2 | 6'-6" X 8'-6" |
| ➤ CORRIDOR | 5'-3" WIDE | ➤ MAID ROOM | 8'-0" X 9'-6" |
| ➤ KITCHEN | 11'-0" X 9'-6" | | |
| ➤ TERRACE | 5'-3" X 9'-6" | | |

T
Y
P
E

E

1820 sq.ft



- | | | | |
|----------------|-----------------|--------------|-----------------|
| ➤ TERRACE | 10'-0" X 7'-3" | ➤ MAID ROOM | 8'-0" X 9'-0" |
| ➤ BATH 1 | 8'-0" X 6'-6" | ➤ CORRIDOR | 5'-0" WIDE |
| ➤ BEDROOM 1 | 15'-0" X 12'-6" | ➤ BEDROOM 2 | 13'-0" X 14'-6" |
| ➤ LOBBY | 4'-6" WIDE | ➤ BATH 3 | 7'-6" X 6'-0" |
| ➤ LOUNGE | 23'-0" X 13'-3" | ➤ BED ROOM 3 | 12'-0" X 15'-0" |
| ➤ OPEN KITCHEN | 12'-0" X 6'-6" | ➤ BATH 4 | 5'-6 X 8'-6" |
| ➤ TERRACE 2 | 5'-0" X 16'-0" | ➤ DRESS | 5'-6" X 6'-1.5" |
| ➤ KITCHEN | 12'-0" X 9'-0" | | |
| ➤ BATH 2 | 4'0" X 5'-0" | | |

T
Y
P
E

F

1820 sq.ft



- TERRACE 10'-0" X 7'-3"
- BATH 1 8'-0" X 6'-6"
- BEDROOM 1 15'-0" X 12'-6"
- LOBBY 4'-6" WIDE
- LOUNGE 23'-0" X 13'-3"
- OPEN KITCHEN 12'-0" X 6'-6"
- TERRACE 2 5'-0" X 16'-0"
- KITCHEN 12'-0" X 9'-0"
- BATH 2 4'-0" X 5'-0"
- MAID ROOM 8'-0" X 9'-0"
- CORRIDOR 5'-0" WIDE
- BEDROOM 2 13'-0" X 14'-6"
- BATH 3 7'-6" X 6'-0"
- BED ROOM 3 12'-0" X 15'-0"
- BATH 4 5'-6" X 8'-6"
- DRESS 5'-6" X 6'-1.5"

T
Y
P
E

G

1900 sq.ft



- TERRACE 17'-9" X 5'-6"
- BATH 1 9'-0" X 7'-0"
- BEDROOM 1 16'-0" X 14'-0"
- CORRIDOR 5'-3" WIDE
- LOUNGE 19'-0" X 14'-0"
- POWDER 5'-0" X 4'-6"
- TERRACE 2 4'-9" X 6'-3"
- KITCHEN 12'-9" X 8'-6"
- BATH 2 8'-0" X 6'-0"
- MAID ROOM 8'-0" X 9'-0"
- DRAWING ROOM 15'-0" X 12'-0"
- BEDROOM 2 15'-0" X 12'-3"
- BATH 3 8'-0" X 6'-0"
- BED ROOM 3 12'-0" X 14'-9"
- BATH 4 5'-0" X 7'-0"
- BATH 5 5'-0" X 5'-6"
- OPEN TO SKY 1 2'-6" X 5'-6"
- OPEN TO SKY 2 12'-9" X 3'-6"

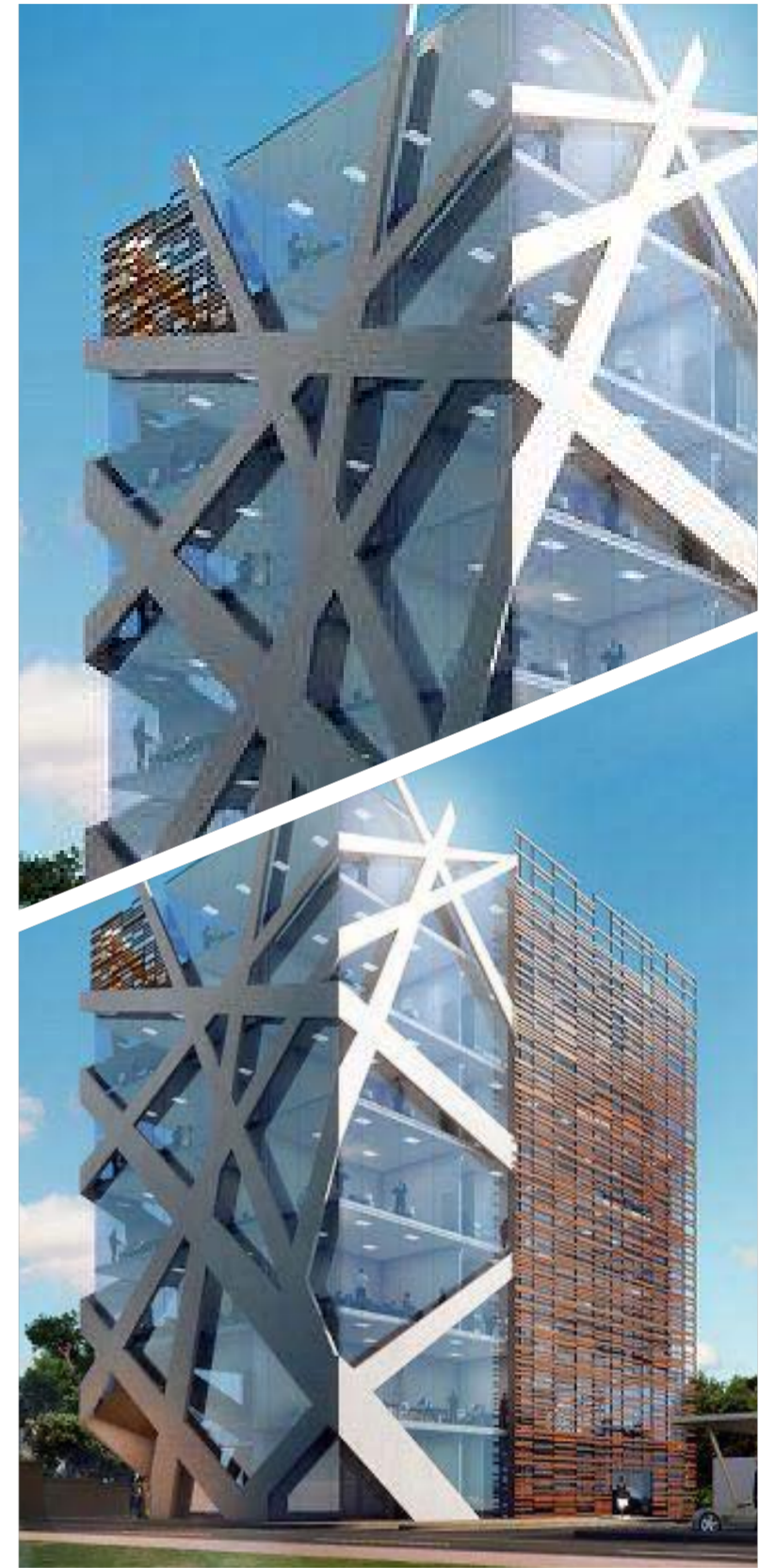
PROJECTS IN SPOTLIGHT



MIDTOWN TOWERS
SITE OFFICE H-13



AL-HUNAIN HOTEL
4 STAR HOTEL



CUBIC DEVELOPERS
HEAD OFFICE





OUR TEAM & PARTNERS



AL-HUNAIN GROUP
ESTD. 1992



CUBIC DEVELOPERS
(PVT) LTD



**MIDTOWN
TOWERS**



**CUBIC
AGRO FARMS**



**HUNAIN
HOTEL**



**BUKHARI TRAVEL SERVICES (PVT) LTD
ISLAMABAD**



Design House



4e Marketing



MIS ENERGY SOLUTIONS

A Project By



CUBIC

DEVELOPERS (PVT) LTD




SCAN FOR MORE INFO

 MidTownisb

 midtownisb

 www.midtownisb.com

 info@midtownisb.com

 (0301) 786 0 786 / (03) 123 123 456